

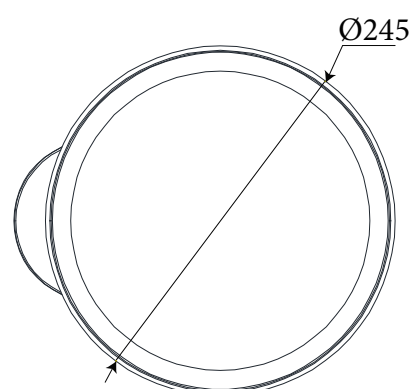
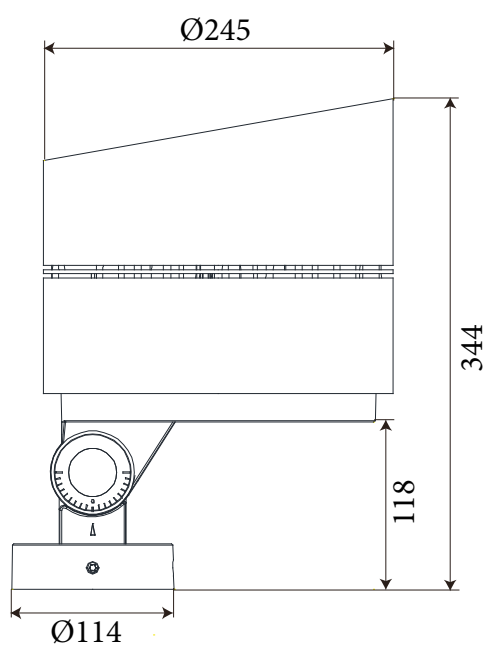
GARNET SPIN XL

USER MANUAL



1. The luminaire shall be installed by a qualified electrician and wired in accordance with the latest IEE electrical regulations or the national requirements.
2. No supplied water-proof box, installation should be advised by qualified professional.
3. The external flexible cable can not be replaced. If the cable is damaged, the luminaire should be discarded.

DRAWING

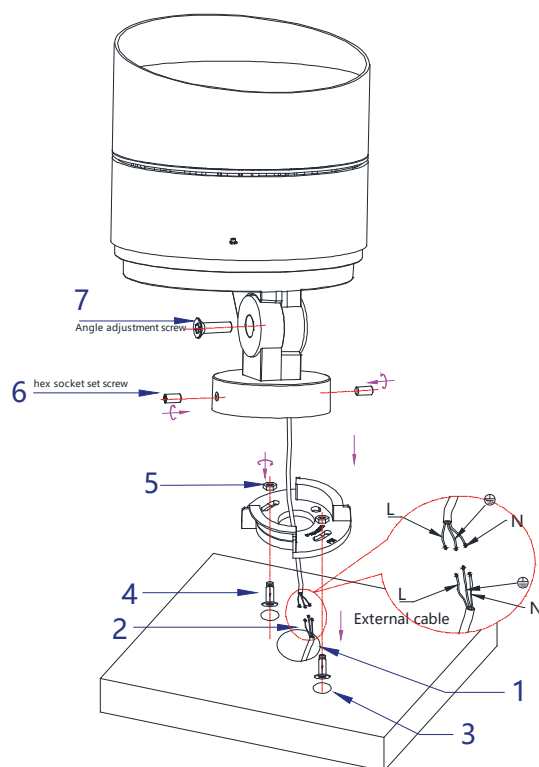


CAUTIONS:

1. Please read this installation instruction carefully before installation, and must install by professional. When installing the wire, please confirm that it is in a power-off state to avoid electric shock;
2. After installation, check whether there is a short circuit in the circuit before commissioning, and whether the power supply voltage is correct, in case to avoid the product not be used normally or lamp damaged ;
3. Built-in breathable valve(voir) in lamp, please do not disassemble it at will.

The product shall not be disassembled without permission by our company.

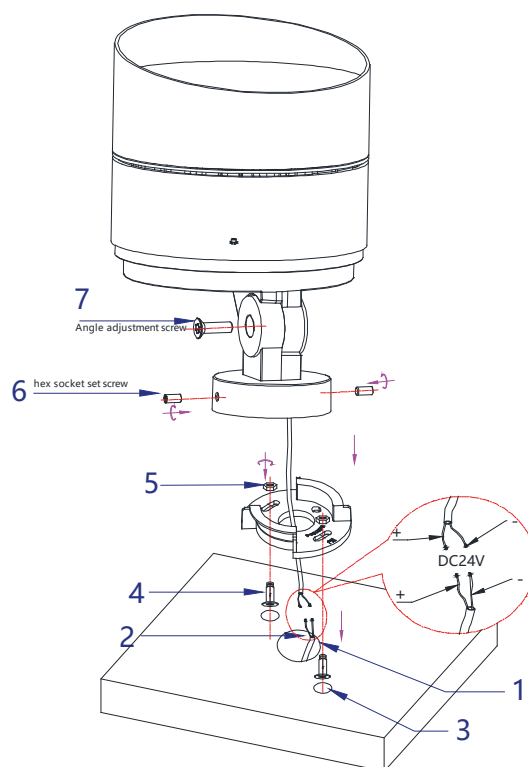
INSTALLATION AC220V



1. Drill installation line holes in the installation surface;
2. According to the L, N and ground wires, corresponding to the wiring connection reverse and connection error
3. Drill the expansion screw holes on the installation surface at the corresponding positions of the lamp body;
4. Drive the expansion screw into the expansion screw hole;
5. Tighten the expansion nut;
6. Install the two hex socket set screws and tighten;
7. When readjust the angle, loosen the angle adjustment screw and lock it when turning to the bottom of the required angle.

Remarks: hex wrench is already in the packing bag.

INSTALLATION DC24V



1. Drill installation line holes in the installation surface;
2. According to the L, N and ground wires, corresponding to the wiring connection reverse and connection error;
3. Drill the expansion screw holes on the installation surface at the corresponding positions of the lamp body;
4. Drive the expansion screw into the expansion screw hole;
5. Tighten the expansion nut;
6. Install the two hex socket set screws and tighten;
7. When readjust the angle, loosen the angle adjustment screw and lock it when turning to the bottom of the required angle.

Remarks: hex wrench is already in the packing bag.