

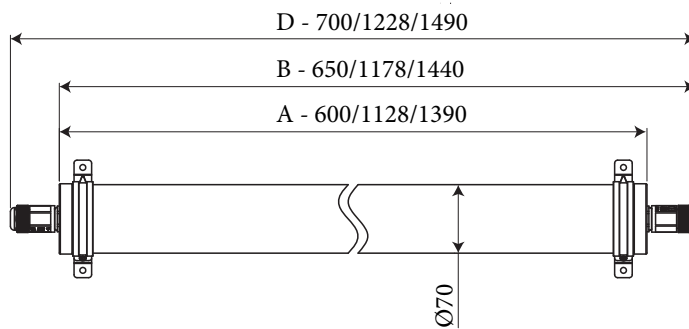
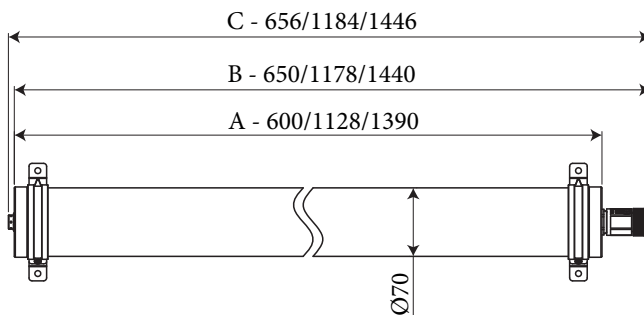
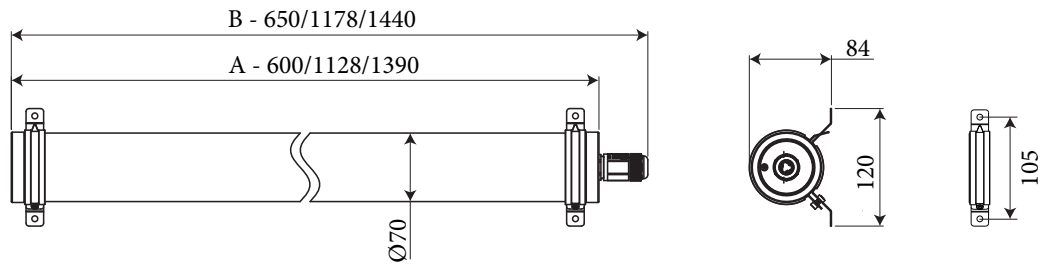
BAND-TUBE

USER MANUAL

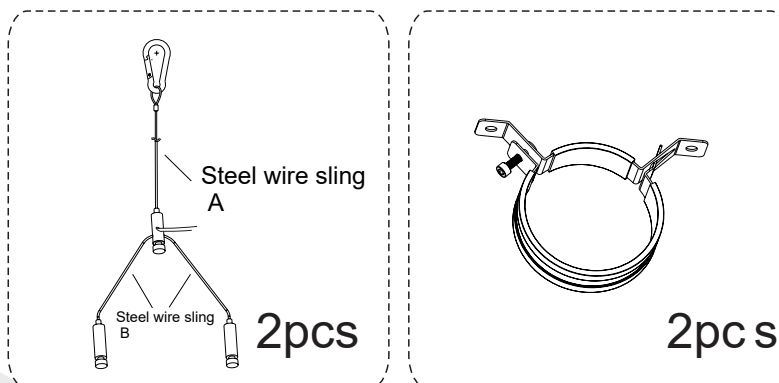


1. The luminaire shall be installed by a qualified electrician and wired in accordance with the latest IEE electrical regulations or the national requirements.
2. No supplied water-proof box, installation should be advised by qualified professional.
3. The external flexible cable can not be replaced. If the cable is damaged, the luminaire should be discarded.

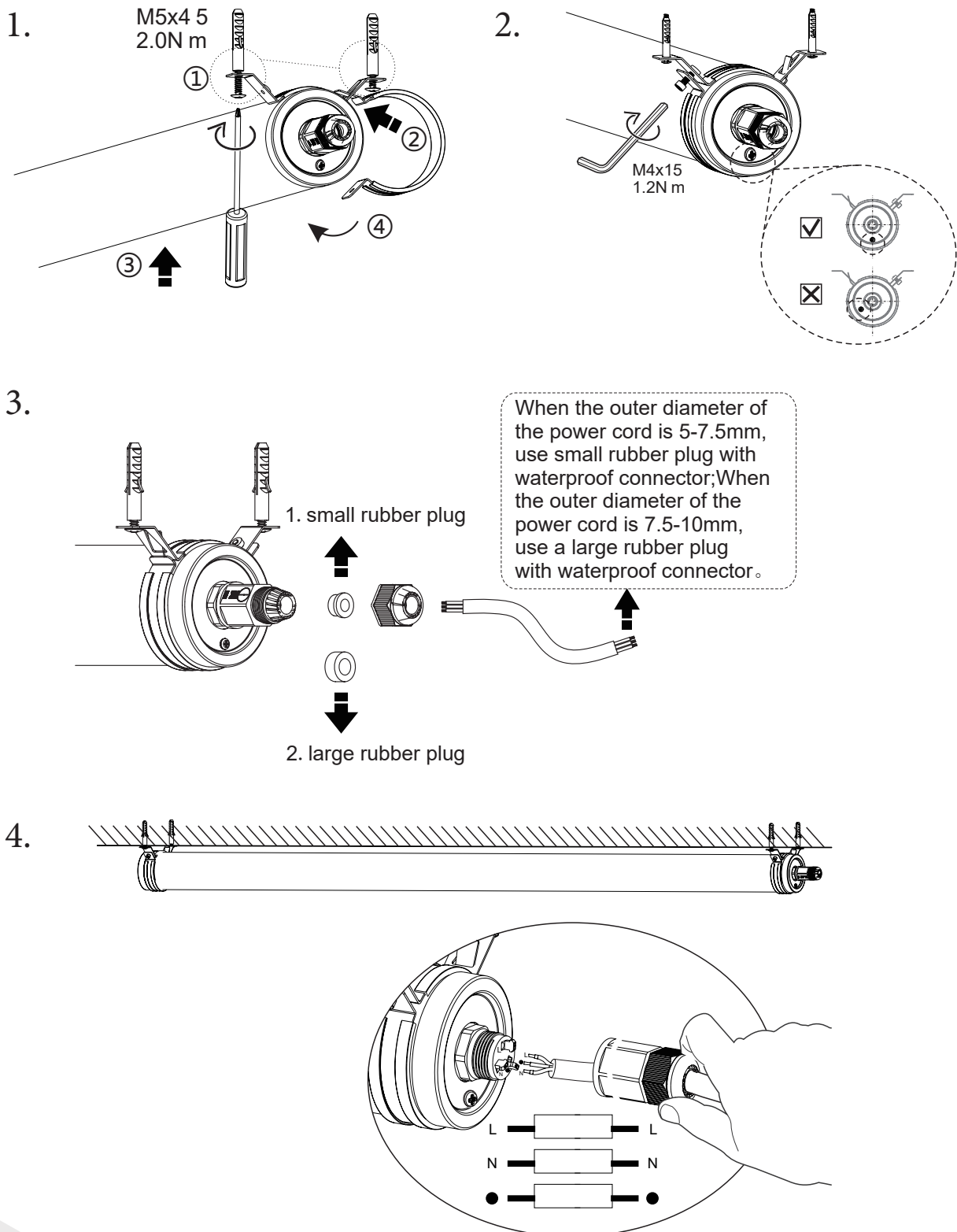
I. Drawings.



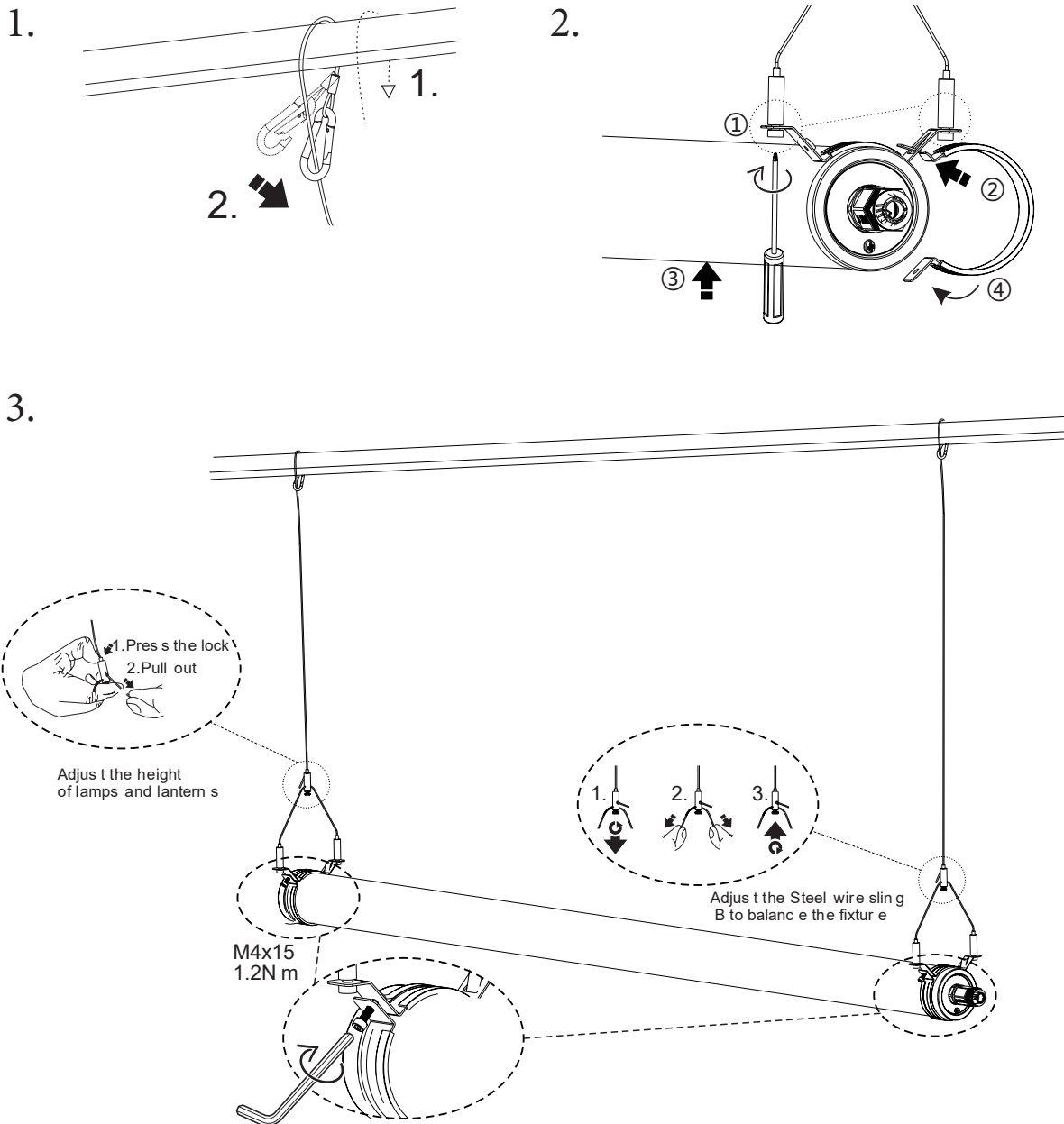
A-Length of the body;
 B-Length of the body with single connector;
 C-Length of the body with single connector and vent;
 D-Length of the body with double connectors.



II. Ceiling mounting installation.



III. Suspension mounting installation.



If the external flexible cable or cord of this luminaire is damaged, it shall be exclusively replaced by the manufacturer or his service agent or a similar qualified person in order to avoid a hazard.