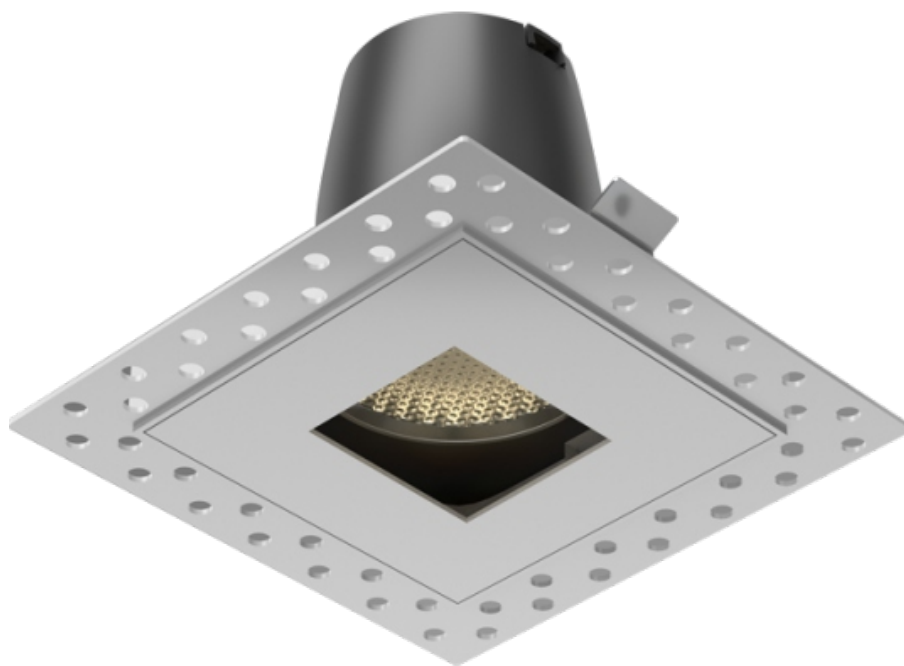
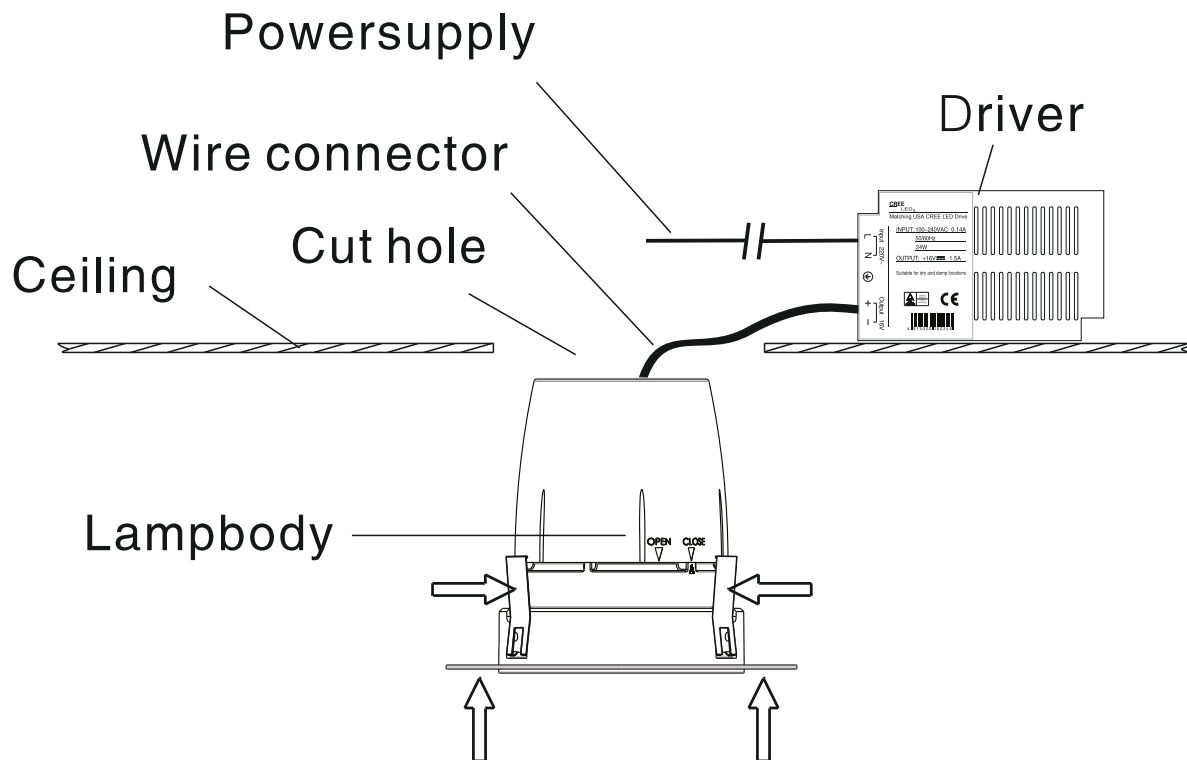


MIRA Q

USER MANUAL



1. The luminaire shall be installed by a qualified electrician and wired in accordance with the latest IEE electrical regulations or the national requirements.
2. No supplied water-proof box, installation should be advised by qualified professional.
3. The external flexible cable can not be replaced. If the cable is damaged, the luminaire should be discarded.



Notice:

1. This fixture works under condition of AC230V/50HZ power input
2. Turn off the power supply before maintenance and installation. Ensure the correct installation before turn on the power supply.
3. Ensure a distance of 75mm away from the fixture for the sake of air ventilation and their use should obey all fire regulations. The distance between the fixture and the lighted object must be 800mm at least. Please do not use the fixture in more than 40 degrees Celsius temperature environment.
4. Install the fixture in the safety ceiling.
5. Don't be covered by adiabatic material at any time.
6. Please refer to qualified engineer if any other questions about the manual.

Instruction:

1. See diagram below, cut installation hole on the ceiling.
2. Plug the input supply wire into the Ballast quick connector correctly.
3. Push the two springs up, install the fixtures correctly into the cutting hole.
4. Installation completed, turn on the power supply.